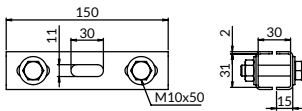




# CHANNEL CONNECTORS LSE

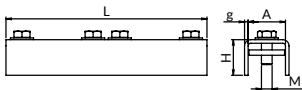
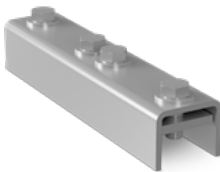


**Usage:** for creating facial structural connections of channels; it allows for multiple adjustment of the fastening opening location in the channel; it makes professional connection of flat and spatial fastening systems easier.

 electro-galvanized

## TO TYPE A CHANNEL

Weight [kg]	Designation for the order	Catalogue number
0,340	LSEA	81140130300



## Set includes:

### For LSEA


- two connectors
- top + bottom
- four round washers
- two hexagonal nuts.
- two bolts with hexagonal heads, full thread

### For LSEMF, LSEMB

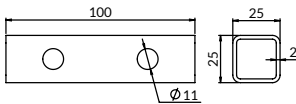
- a connector
- threaded plate
- four round washers
- four bolts with hexagonal heads, full thread

## TO MF, MB TYPE CHANNEL

For channels	Dimensions					Weight [kg]	Designation for the order	Catalogue number
	A [mm]	L [mm]	H [mm]	g [mm]	M [mm]			
MG, MF, MH, MI	42	226	40	4	M12	0,810	LSEMF	81140141410
MB, ME	51	226	40	4	M12	0,880	LSEMB	81140150400

 Permissible load

# CHANNEL CONNECTORS LS



 electro-galvanized

 Permissible load

**Usage:** for creation of structural connections of channels; it gives the possibility of strengthening channel connections internally; it makes professional connection of flat and spatial fastening systems easier.

For channels	Weight [kg]	Designation for the order	Catalogue number
A	0,110	LSA	81140130300